



## March Newsletter 2024



### Message from the President

Since sign on day the club has been busy in many areas:

- Installation of Martin Collins surfaces x 3 the last week of February. Much work before and especially after has been done by the management committee and in particular with the kind assistance of David, Fiona and Jai-Don Grayfoner who the committee estimated did over three days of work rectifying earthworks around the arena area, moving sand from the lunge yard, ten minute area and kindly down the road to a nearby neighbour of PRARG with the spoil from arena 3. PRARG acknowledges the significance of the arenas which would not occur without Equestrian QLD, Dressage QLD and Martin Collins Australia. These arenas are still settling with rolling and harrowing occurring twice weekly. Martin Collins and EQ are working on the drainage and new sides which should occur prior to June. MOST IMPORTANTLY NO MAURE MUST BE LEFT ON THE SURFACE. There are several rakes and a small trolley to take the manure away.
- The management committee have acknowledged the tremendous work by Grayfoners with Dan Murphy cards on which they can have a significant party.
- Rain, grass and mowing – They all go hand in hand and again Anna and Marlies have taken the brunt of this over the summer period and whilst reimbursed with vouchers, the management committee did an extra thank you for some Visa cards.
- In addition we have some dedicated husbands and members down there regularly whipper snipping and mowing the yards, fence lines with which Bunnings cards are thank you of choice.
- The management committee has been busy meeting with LCC regarding the club KPI's and future infrastructure long term plan with the news delivered by the CPR group who on behalf of LCC did the successful grant submission for the indoor arena cover. This is so exciting for the club has this has been more than a ten year part of our facility programme and wish list. So what this space for news on proposed construction times etc.
- The first clinics for 2024 are being held over Easter. Unfortunately the working equitation clinic was cancelled due to low response however Traci Baldwin and Tanja Mitton were held with good numbers. The club has with approval from EQ to use the unused grant funds on further clinics and to this end on 18th May there will be clinics with Liz Coe and Jacqui Huppert with the pole clinic with Lisa Koppman on 25th May.
- The first two competitions of 2024 saw very good number for the ribbon day and a good response with riders wanting to test evaluations. The \* day on 24th March had lower numbers than normal but there were quality horse/rider combinations and we found the gear checking procedure worked well at this event.
- Workers vouchers – the management committee have reviewed and at the meeting on 12.3.24 have made the following changes:
  - No limits on how many vouchers can be used towards clinics and functions
  - Vouchers are non-transferable
  - Vouchers remain current for two years from date of issue.

Happy riding

Kay

### 2024 Committee

#### President:

Miss Kay Paulsen - 0419 741 273 [prarginc81@bigpond.com](mailto:prarginc81@bigpond.com)

Vice Presidents: Naomi O'Farrell, Anne Mabardi

#### Secretary:

Maria Gould [mgould@bne.catholic.edu.au](mailto:mgould@bne.catholic.edu.au)

Treasurer: Amanda Wright

Membership Secretary: Chrissie Hoffman [prarg.membership@gmail.com](mailto:prarg.membership@gmail.com)

#### Committee Members:

Liz Perkins, Leanne Smith, Jess Merlo, Linda Van Rensberg, Kate Thompson

Publicity: Kate Thompson, Lorraine Edwards

Grounds: Anna Flohr - 0407 622 666

Dressage - Kay Paulsen, Melissa Forrest, Linda Van Rensberg, Kylie Rye, Kylie Munn, Jess Merlo, Emma Flegman, Kate Thompson

### 2024 Calendar Dates

#### Open EA Days

- Sunday 12th May Participant & Club classes
- Sunday 30th June: Lex Wills Memorial Star Champs Medium to Grand Prix
- Sunday 30th June: Official 'Pony Spectacular', plus Competitive Preliminary to Grand Prix
- Sunday 1st Sept: Participant & Club/ GSE OTT

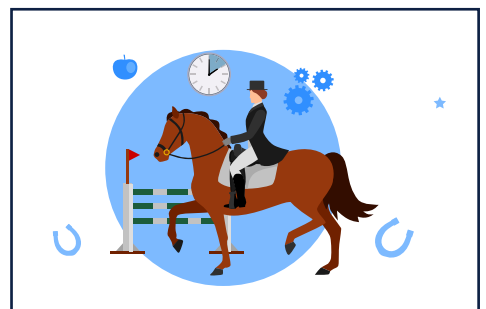
#### Club Member Days (members only)

- Sunday 06 May: Dressage Teams (monday public holiday)
- Sunday 2nd June: 1st Leg of the PRARG Winter Series (1 of 2) This may include OTT Classes
- Sunday 14 July: 2nd Leg of the PRARG Winter Series (2 of 2) This may include OTT Classes
- Sunday 04 August: Ribbon Day
- Sunday 22 September: Ribbon Day
- Sunday 27 October: Fun Day
- November: Summer Series Leg 1
- December: Summer Series Leg 2
- January 2024: Summer Series Leg 3

#### Clinics

- Thursday 25th April: ANZAC DAY SADDLERY MARKET
- Saturday 25th May: Pole Clinic
- TBA Protocol days
- TBA clinics

For full details on the above events closer to the date, (programs, draws and links to the entry page on Nominate), visit our website [www.prarg.com/calendar.html](http://www.prarg.com/calendar.html)

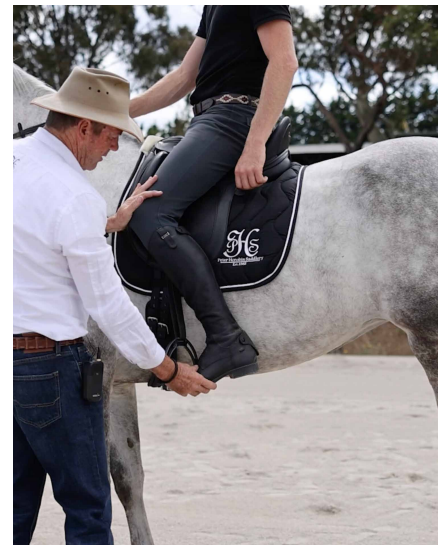


The Members' Handbook is available to view/download from the PRARG website. Please take a bit of time to read this document so you are familiar with club information, rules and by-laws.



*Sponsors*

**SPONSOR APPRECIATION**

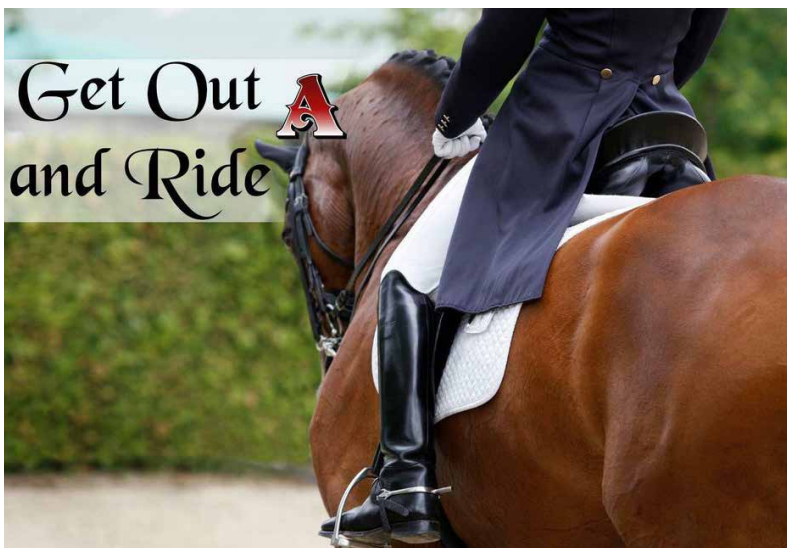


**Peter Horobin Saddlery** was created by Peter & Julie Horobin when they were first married. Their energy, hard work, and drive for craftsmanship & equine back health has evolved into a well known and admired company on an international stage. Rhys & Marlee Horobin son and daughter - who's experiences are in the field of saddle design, saddle fitting, manufacturing and creative inspiration have been intrinsically involved in the business for the last 15 years. Undoubtedly - the Horobin family, continue to evolve their brand to ensure that Peter Horobin Saddlery continues to strengthen and deepen in quality and craftsmanship for many years to come.

Riding in a Peter Horobin Saddle is part of the wellbeing of you and your horse – a fundamental choice for equine back health, owning one of our saddles, maximises enjoyment in the privilege of owning a horse. We help you stay connected to your horse. Which in itself is a life well lived.

**Peter Horobin Saddlery** can provide saddle fittings for any saddle, anywhere. Todd, one of our esteemed saddle fitters, has been servicing South-East QLD and Northern NSW for a few months now, sharing the passion of PHS with fellow riders.

If you are based in this area and would like your saddle fitted by an expert, contact Todd on 0448034477 [www.horobin.com.au](http://www.horobin.com.au)



**Aitken's Saddlery** is a family owned business who are stockists of Thorowgood, Fairfax, Kent & Masters, Defiance, Paul Jones, Jeffries, Lucardi, Luc Childeric, Tredstep, Schockemohle, Airowear, Samshield, LeMeiux, Ariat, Wrangler, Equilibrium Products, Hi Form,, Horze, Zilco, RM Williams and much more.

[www.aitkensaddlery.com](http://www.aitkensaddlery.com)





Whats New...

NEWS



We welcome a new sponsor for 2024: Peter Horobin and they are the sponsors of our 12th May Participation and Club Dressage.

Thank you Todd and Peter Horobin Saddles for sponsoring the Participation/Club dressage on 12th May.

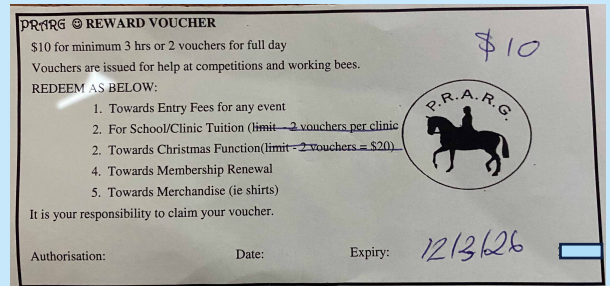
Rain, grass and mowing – They all go hand in hand and again Anna and Marlies have taken the brunt of this over the summer period, we cannot thank you enough for all that you do - we very much appreciate it! We hope you enjoy your visa voucher gifts as a token of our gratitude.



Workers Vouchers

The management committee have reviewed and at the meeting on 12.3.24 have made the following changes:

- No limits on how many vouchers can be used towards clinics and functions
- Vouchers are non-transferable
- Vouchers remain current for 2 years from date of issue.



**Installation of Martin Collins surfaces x 3 the last week of February.** Much work before and especially after has been done by the management committee and in particular with the kind assistance of David, Fiona and Jai-Don Grayfoner who the committee estimated did over three days of work rectifying earthworks around the arena area, moving sand from the lunge yard, ten minute area and kindly down the road to a nearby neighbour of PRARG with the spoil from arena 3. *PRARG acknowledges the significance of the arenas which would not occur without Equestrian QLD, Dressage QLD and Martin Collins Australia.* These arenas are still settling with rolling and harrowing occurring twice weekly. Martin Collins and EQ are working on the drainage and new sides which should occur prior to June. **MOST IMPORTANTLY NO MAURE MUST BE LEFT ON THE SURFACE.** There are several rakes and a small trolley to take the manure away.

The management committee has been busy meeting with LCC regarding the club KPI's and future infrastructure long term plan with the news delivered by the CPR group who on behalf of LCC did the successful grant submission for the indoor arena cover. This is so exciting for the club as this has been more than a ten year part of our facility programme and wish list. So watch this space for news on proposed construction times etc.







Results...



**NEW GEAR CHECK RULES**

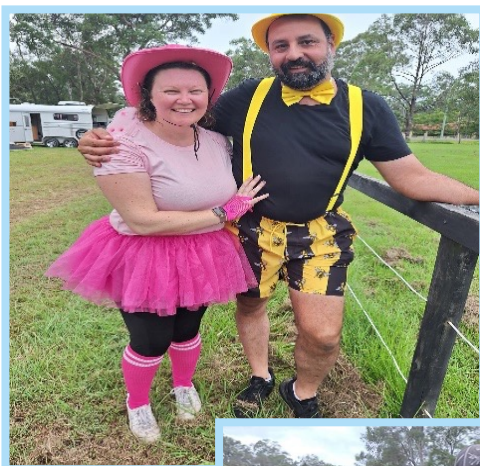


The club had a very successful fundraising campaign including \$2 from all rider entries/canteen takings and raffle going towards the Cancer Council.

Congratulations to the dress up for Cancer Council:  
**1st** Jodi Wyllie **2nd** Paula Day **3rd** Tracy Evans  
**Judges Award:** Taylah Hoare and **First Aid Award** Alicia Dyke for their great dress up's.



(Above) First Place



(Right) 3rd Place



(Above) 2nd Place: Dannii & Alfio supporting the cause which is very close to her heart.



# Results - Members Day

PRARG Members Only Dressage & Protocol

## RESULTS

Horse	Rider	Class	Place	Points	DR%
GLENCOE TORINO	Isabella Wilkinson-mcintyre	Advanced 5.1	1	68.243	
TAP ALONG TINTIN	Melanie Wyeth	Advanced 5.1	2	65.405	
STONEFOX GLADIATOR	Julianne Tetlow	Advanced 5.2	1	64.737	
OPAL STAR OF OAKSIDE	Natalie Brown	Elementary 3.1	1	65.714	
FRANGIPANI FARM ROMEO	Anna Minogue	Elementary 3.1	2	62.286	
MIMOSAFARM DANCE WITH HONOUR	Sarah Gould	Elementary 3.1	3	61.571	
ZUBRI	Jessica Merlo	Elementary 3.1	4	59.429	
KIRKTON ASTRID	Ruby Goldsmith	Elementary 3.1	5	57.714	
OPAL STAR OF OAKSIDE	Natalie Brown	Elementary 3.2	1	65.875	
INDI MOLLOY	Alicia Dyke	Elementary 3.2	2	63.875	
HP CHARLIE BROWN	Holly Mcdonald-smith	Medium 4.1	1	63.194	
REGAL DONNA INDIRA	Fiona Grayfoner	Medium 4.1	2	61.528	
STONEFOX ZARA	Linda Janse van rensburg	Medium 4.1	3	60.833	
BLOOMFIELD FURSTINOUK	Emma Hurley	Medium 4.1	4	59.028	
HP CHARLIE BROWN	Holly Mcdonald-smith	Medium 4.2	1	67.703	
BLOOMFIELD FURSTINOUK	Emma Hurley	Medium 4.2	2	66.486	
REGAL DONNA INDIRA	Fiona Grayfoner	Medium 4.2	3	65.676	
STONEFOX ZARA	Linda Janse van rensburg	Medium 4.2	4	63.108	
TORIKA PARK CARDAMON	Amanda Skelton	No Canter (Prep 1) - Restricted**	1	65	
FARAMAY OF DELAMERE	Justine Murray	No Canter (Prep 1) - Restricted**	2	63	
ANMECA SHOOTING STAR	Melyssa Macready	No Canter (Prep 1) - Restricted**	3	63	
PINNACLE HOT CHILLI	Anna Flohr	No Canter (Prep 1) - Restricted**	4	62	
KATIE	Lauren Fitzjohn	No Canter (Prep 1) - Restricted**	4	62	
NANDOO SIGNET	Maria Gould	No Canter (Prep 1) - Restricted**	4	62	
BOSTAN BAY BRILLIANCE	Danielle Whiteford	No Canter (Prep 1) - Restricted**	7	60.667	
THOR	Danielle Whiteford	No Canter (Prep 1) - Restricted**	8	60.333	
PHOENIX	Paula Day	No Canter (Prep 1) - Restricted**	9	58.333	
ATLANTIC PRIDE	Trish Maginnis	No Canter (Prep 1) - Restricted**	10	58	
FOR ALL TO ENVY	Cindy Brown	No Canter (Prep 1) - Restricted**	11	52.667	
DAISY LANE HUNTSMAN	Taylor Hore	No Canter (Prep 2) - Open	1	73.333	
FARAMAY OF DELAMERE	Justine Murray	No Canter (Prep 2) - Open	2	68.667	
PINNACLE HOT CHILLI	Anna Flohr	No Canter (Prep 2) - Open	3	61	
NANDOO SIGNET	Maria Gould	No Canter (Prep 2) - Open	4	60.667	
FOR ALL TO ENVY	Cindy Brown	No Canter (Prep 2) - Open	5	60	
PHOENIX	Paula Day	No Canter (Prep 2) - Open	6	58	
EVERDEEN	Nicole Tough	Novice 2.1	1	76.154	
TAYALEE PARK LOVER BOY	Chelsea Gatti	Novice 2.1	2	75.577	
MARTINA MCM	Rebecca Aitken	Novice 2.1	3	70.962	
ASHMEAD HURRICANE	Jessica Vanderlaan	Novice 2.1	4	67.5	
HES A REGAL BABY	Connie Waugh	Novice 2.1	5	65.962	
DIXIELAND GOLD	Jodi Wyllie	Novice 2.1	6	65.577	
TARRENDENE MIA	Kylie Wilson	Novice 2.1	6	65.577	
IN THE PURPLE	Casey-jade Curlewis	Novice 2.1	8	64.808	
KIRKTON ASTRID	Ruby Goldsmith	Novice 2.1	9	64.615	
LAARABELLA	Jessica Merlo	Novice 2.1	10	64.423	
AUSROCK ELIJAH	Claire Gausi	Novice 2.1	11	62.115	
TRUE MYTH	Isabella Miodkovich	Novice 2.1	12	60.962	
MIMOSAFARM DANCE WITH HONOUR	Sarah Gould	Novice 2.2	1	69.375	
ZUBRI	Jessica Merlo	Novice 2.2	2	69.063	
CHEVY CHASE GOLD	Angela Arkadieff	Novice 2.2	3	67.656	
TAYALEE PARK LOVER BOY	Chelsea Gatti	Novice 2.2	4	67.5	
TARRENDENE MIA	Kylie Wilson	Novice 2.2	5	66.25	
MARTINA MCM	Rebecca Aitken	Novice 2.2	5	66.25	
EL ROSE BANJO	Luisse Sand	Novice 2.2	7	66.094	
IN THE PURPLE	Casey-jade Curlewis	Novice 2.2	8	62.969	
FUDGE	Isabella Wilkinson-mcintyre	Preliminary 1.1	1	71.6	
JEMBRAE RIVERFIRE	Kristen McAuslan	Preliminary 1.1	2	68.6	
TOTAL DESTINY	Kaz Roe	Preliminary 1.1	3	68	
BALADONA	Kristy Bailey	Preliminary 1.1	4	61.8	
TISADVANCED	Amanda Chant	Preliminary 1.1	5	61.2	
JEMBRAE BALOU UAWAY	Emma Gould	Preliminary 1.1	6	55	
EBL LYRIC	Tracey Bavinton	Preliminary 1.1 - Restricted**	1	66.6	
KATIE	Lauren Fitzjohn	Preliminary 1.1 - Restricted**	2	65.4	
JEMBRAE DARCO TINUS	Leanne Smith	Preliminary 1.1 - Restricted**	3	64.6	
SASSYTUDE	Tracey Evans	Preliminary 1.1 - Restricted**	4	62	
LYDNA REALM	Cynthia Mortensen	Preliminary 1.1 - Restricted**	5	61.6	
BOSTAN BAY BRILLIANCE	Danielle Whiteford	Preliminary 1.1 - Restricted**	6	61.4	
EQUINE AFFAIR JESSICA	Nicole Wheatley	Preliminary 1.1 - Restricted**	7	60.2	
THOR	Danielle Whiteford	Preliminary 1.1 - Restricted**	8	59.4	
WYNTERMORE	Kellie Coffey	Preliminary 1.1 - Restricted**	9	56	
WEDDERLIE PARK FABIO	Kernyn Anderson	Preliminary 1.1 - Restricted**	10	51.6	
COSTA CONCORDIA LOYAL SOVEREIGN	Abigail Green	Preliminary 1.1 - Restricted**	11	49.4	
FUDGE	Isabella Wilkinson-mcintyre	Preliminary 1.2	1	69.286	
BALADONA	Kristy Bailey	Preliminary 1.2	2	67.5	
JEMBRAE RIVERFIRE	Kristen McAuslan	Preliminary 1.2	3	66.964	
JEMBRAE BALOU UAWAY	Emma Gould	Preliminary 1.2	4	66.607	
DIXIELAND GOLD	Jodi Wyllie	Preliminary 1.2	5	65.893	
TISADVANCED	Amanda Chant	Preliminary 1.2	6	63.393	
LAARABELLA	Jessica Merlo	Preliminary 1.2	7	61.071	
TRUE MYTH	Isabella Miodkovich	Preliminary 1.2	8	58.036	
HES A REGAL BABY	Connie Waugh	Preliminary 1.2 - Restricted**	1	67.143	
EBL LYRIC	Tracey Bavinton	Preliminary 1.2 - Restricted**	2	66.964	
EQUINE AFFAIR JESSICA	Nicole Wheatley	Preliminary 1.2 - Restricted**	3	66.607	
COSTA CONCORDIA LOYAL SOVEREIGN	Abigail Green	Preliminary 1.2 - Restricted**	4	65.357	
LYDNA REALM	Cynthia Mortensen	Preliminary 1.2 - Restricted**	5	65	
WEDDERLIE PARK FABIO	Kernyn Anderson	Preliminary 1.2 - Restricted**	6	61.964	





# Results

## PRARG Star Championships Dressage Prelim - Elem

### Star Championships Results

DARIUS	4101554	Hannah Giblin	Elementary 3.2	ELEM		1			70.25
WILLOWBURN FURSTIN BONNE	4003701	Danielle Keogh	Elementary 3.2	ELEM		2			69.688
BLUEFIELDS FLORENCIA	4014069	Caroline Bonney	Elementary 3.2	ELEM		3			66
QS CHARLESTON	4001995	Tracey Goss	Elementary 3.2	ELEM		4			65
INDI MOLLOY	1028017	Alicia Dyke	Elementary 3.2	ELEM		5			62.563
COOLINDA PARK JACKSON	4005064	Kerrie Skinner	Elementary 3.2	ELEM		6			62.375
FRANGIPANI FARM ROMEO	1019471	Anna Minogue	Elementary 3.2	ELEM		7			61.875
HARRIS PARK RIORDAN	1019825	Charlotte Cox	Elementary 3.2	ELEM		8			60.938
ROSEGLLEN CROWN ROYALE	1032372	Sophie Williams	Elementary 3.2	ELEM		9			59.563
MONTANGO LODGE COMET	1019530	Anne-marie Lasserre	Elementary 3.2	ELEM		10			58.813
OPAL STAR OF OAKSIDE	1045475	Natalie Brown	Elementary 3.2	ELEM		11			58.625
FANTASTIQUE	4011768	Racheal Spring	Elementary 3.2	ELEM		12			56.563
DARIUS	4101554	Hannah Giblin	Elementary 3.3	ELEM		1			70.488
WILLOWBURN FURSTIN BONNE	4003701	Danielle Keogh	Elementary 3.3	ELEM		2			69.329
QS CHARLESTON	4001995	Tracey Goss	Elementary 3.3	ELEM		3			65.854
INDI MOLLOY	1028017	Alicia Dyke	Elementary 3.3	ELEM		4			64.695
MONTANGO LODGE COMET	1019530	Anne-marie Lasserre	Elementary 3.3	ELEM		5			62.317
FANTASTIQUE	4011768	Racheal Spring	Elementary 3.3	ELEM		6			61.768
COOLINDA PARK JACKSON	4005064	Kerrie Skinner	Elementary 3.3	ELEM		7			61.524
FRANGIPANI FARM ROMEO	1019471	Anna Minogue	Elementary 3.3	ELEM		8			60.061
ROSEGLLEN CROWN ROYALE	1032372	Sophie Williams	Elementary 3.3	ELEM		9			59.817
HARRIS PARK RIORDAN	1019825	Charlotte Cox	Elementary 3.3	ELEM		10			58.232
EVERDEEN	4004906	Nicole Tough	Novice 2.2	NOV		1			73.906
MIMOSAFARM DANCE WITH HONOUR	4011247	Sarah Gould	Novice 2.2	NOV		2			67.109
KIRKTON ASTRID	4002627	Danielle Shearer	Novice 2.2	NOV		3			66.953
ZUBRI	4101628	Jessica Merlo	Novice 2.2	NOV		4			66.094
MAIVE KEEVA WELSHMAN	4010347	Kate O'sullivan	Novice 2.2	NOV		5			65.625
MARTINA MCM	4100964	Rebecca Aitken	Novice 2.2	NOV		6			64.766
ROULETTE M	4008888	Wendi Muehlenbeck	Novice 2.2	NOV		7			64.375
MONTANGO LODGE ACROBAT	4006857	Yvette Vlies	Novice 2.2	NOV		8			63.594
CHEVY CHASE GOLD	1028167	Angela Arkadieff	Novice 2.2	NOV		8			63.594
BELTANA BLUE STEEL	4009331	Kerrie Forbes	Novice 2.2	NOV		10			62.891

MIMOSAFARM DANCE WITH HONOUR	4011247	Sarah Gould	Novice 2.3	NOV		2			69.857
ROULETTE M	4008888	Wendi Muehlenbeck	Novice 2.3	NOV		3			67.214
MARTINA MCM	4100964	Rebecca Aitken	Novice 2.3	NOV		4			67
MAIVE KEEVA WELSHMAN	4010347	Kate O'sullivan	Novice 2.3	NOV		5			66.357
KIRKTON ASTRID	4002627	Danielle Shearer	Novice 2.3	NOV		6			65.929
MONTANGO LODGE ACROBAT	4006857	Yvette Vlies	Novice 2.3	NOV		7			65.786
BELTANA BLUE STEEL	4009331	Kerrie Forbes	Novice 2.3	NOV		8			65.714
CHEVY CHASE GOLD	1028167	Angela Arkadieff	Novice 2.3	NOV		9			65.286
ASHMEAD HURRICANE	2200989	Jessica Vanderlaan	Novice 2.3	NOV		10			63.643
FURST FLORENCIO	4013005	Lancia Puddle	Novice 2.3	NOV		11			63.143
TRUE MYTH	4014079	Isabella Mlovakich	Novice 2.3	NOV		12			56.714
Finch Farm Cosmique Cavall		Sandi-Leigh Norris	PE Grade 5 - L3			1			67.596
Tayalee Park Lover Boy		Chelsea Gatti	PE Grade 5 - L3			2			67.404
FINCH FARM COSMIQUE CAVALL	4014097	Sandi-Leigh Norris	PE Grade 5 - L4			1			67.222
TAYALEE PARK LOVER BOY	4013938	Chelsea Gatti	PE Grade 5 - L4			2			63.519
SPRINGSIDE EDDISON	4011727	Sarah Kassulke	Preliminary 1.2	PRE		1			70.357
FOXHUNTER PEGASUS	4002298	Glenn Pearce	Preliminary 1.2	PRE		2			69.018
JEMBRAE RIVERFIRE	4006866	Kristen Mcauslan	Preliminary 1.2	PRE		3			68.482
FOXHUNTER PARAGON	4002298	Glenn Pearce	Preliminary 1.2	PRE		4			68.036
TOTAL DESTINY	4009839	Kaz Roe	Preliminary 1.2	PRE		5			67.946
KINGSFIELD DIOR	4004906	Nicole Tough	Preliminary 1.2	PRE		6			66.875
EBL LYRIC	1019304	Tracey Bavinton	Preliminary 1.2	PRE		7			66.071
FOREVER NEWYORK	4005083	Alana Allard	Preliminary 1.2	PRE		8			64.643
EL ROSE BANJO	1024377	Luise Sand	Preliminary 1.2	PRE		9			63.036
HERCULES OET OLA KLOOSTERVEE	1049500	Sahara Scott	Preliminary 1.2	PRE		10			62.411
REMI FURSTIN HIT	4014370	Danielle McMahon	Preliminary 1.2	PRE		11			61.071
BAMBOROUGH OVER THE MOON	1043683	Olivia Stevenson	Preliminary 1.2	PRE		12			60.982
STEEL CAP STILETTO	4000175	Naomi Burton	Preliminary 1.2	PRE		13			60.536
CRAIGLEA GUNSMOKE	4011191	Alison Effrett	Preliminary 1.2	PRE		14			59.554
MYSTIC PARK SEBASTION	1024651	Casey Pierpoint	Preliminary 1.2	PRE		15			59.464
GREENROCKS FLEUR	4005208	Michelle Handbury	Preliminary 1.2	PRE		16			59.375
KINGSFIELD DIOR	4004906	Nicole Tough	Preliminary 1.3	PRE		1			71.354
FOXHUNTER PARAGON	4002298	Glenn Pearce	Preliminary 1.3	PRE		2			67.708
SPRINGSIDE EDDISON	4011727	Sarah Kassulke	Preliminary 1.3	PRE		3			67.5
FOXHUNTER PEGASUS	4002298	Glenn Pearce	Preliminary 1.3	PRE		4			66.563
EBL LYRIC	1019304	Tracey Bavinton	Preliminary 1.3	PRE		5			66.458
REMI FURSTIN HIT	4014370	Danielle McMahon	Preliminary 1.3	PRE		6			65.938
JEMBRAE RIVERFIRE	4006866	Kristen Mcauslan	Preliminary 1.3	PRE		7			64.896
STEEL CAP STILETTO	4000175	Naomi Burton	Preliminary 1.3	PRE		8			62.396
GREENROCKS FLEUR	4005208	Michelle Handbury	Preliminary 1.3	PRE		9			61.979
FOREVER NEWYORK	4005083	Alana Allard	Preliminary 1.3	PRE		10			61.458
EL ROSE BANJO	1024377	Luise Sand	Preliminary 1.3	PRE		11			60.417
BAMBOROUGH OVER THE MOON	1043683	Olivia Stevenson	Preliminary 1.3	PRE		12			60.313
SUPER FALCON	1045945	Verona Begadon	Preliminary 1.3	PRE		13			56.667
CRAIGLEA GUNSMOKE	4011191	Alison Effrett	Preliminary 1.3	PRE		14			48.854







*Results*

Star Championships Results







# Easter Super Clinic

## Super Clinic Photos



## Traci Baldwin & Tanja Mitton Clinics







## LOOKING AFTER YOUR HEALTH

# Skin Cancer Prevention

Protect yourself in **five ways** from skin cancer



**SLIP**



**SLOP**



**SLAP**



**SEEK**



**SLIDE**

[www.cancer.org.au/cancer-information/causes-and-prevention/sun-safety/campaigns-and-events](http://www.cancer.org.au/cancer-information/causes-and-prevention/sun-safety/campaigns-and-events)

As riders we see a lot of sun. Generally speaking we are more sun safe than 10 years ago thanks in part to other riders sharing their stories.

Have you thought about the sun's harmful effects to your eyes?

Ultraviolet (UV) light can harm your eyes.

Too much exposure to UV light raises your risk of eye diseases and other problems. Here are a few of the eye conditions you can avoid by wearing sunglasses:

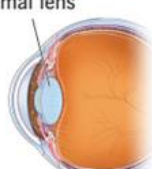
- Cataracts and eye cancers. These can take years to develop. Each time you bask in the sun without eye protection, you increase your risk of serious disease.

### Cataracts (age-related)

Normal eye



Normal lens



Eye with cataract



Cloudy lens



<http://my.clevelandclinic.org/health/diseases/8589-cataracts-age-related>

### PTERYGIUM



Abnormal growth of the conjunctiva on the cornea

- Growths on the eye, such as pterygium, can show up in our teens or 20s. Anyone who spends long hours in the sun

<http://www.vrmny.com/conditions/pterygium>

People of all ages should take precautions whenever they are outdoors. This includes children.

Protect your eyes from sun damage in every season

Many sunglasses shoppers forget to check the UV rating before purchasing a pair. Be sure to select sunglasses that provide 100% UV or UV400 protection, or block both UV-A and UV-B rays. Here are additional tips to protect your eyes from UV damage, no matter what the season:

- Wear a hat along with your sunglasses. Broad-brimmed hats are best.
- Know that clouds don't block UV light. The sun's rays can pass through haze and clouds.
- Sunlight is strongest midday to early afternoon, at higher altitudes and when reflected off of water, ice or sand.
- Never look directly at the sun.
- By embracing these simple guidelines, you and your family can enjoy the sun safely all year long.



Sponsors

SPONSOR APPRECIATION

# Stance<sup>®</sup> —EQUITEC<sup>®</sup>



## Stance Equitec Essentials

### Essentials Range



**Aloe Vera Juice** - May be used internally as a digestive tonic or externally for skin irritations.



**Echinacea Powder** - 100% Pure. For immune support.



**Biotin Extra Strength** - 1000mg/kg - Biotin has been shown to improve hoof quality in horses with poor hooves when supplemented for a minimum of 6 to 12 months.



**Glucosamine Sulphate** - Glucosamine has a role in joint, ligament and tendon support.



**Diamond V Yeast XPC** - New concentrated formula. Saccharomyces Cerevisiae yeast culture. A prebiotic thought to positively influence the growth of good bacteria and eradicate bad gut bacteria.



**Hemp Huls and Hearts** - The shell of the hemp after the seed is removed. Omega 3, fibre, 20% oil, and amino acids. For joint support.



Your free online equine nutritionist

For help choosing the right supplements for your horse, try Stance TruGuide.

1. Visit [www.StanceEquitec.com.au/TruGuide](http://www.StanceEquitec.com.au/TruGuide)
2. Answer the short 5 minute questionnaire
3. Receive a tailored balanced diet with product suggestions



**Stance**  
—EQUITEC

Freecall: 1800 782 623

[www.stanceequitec.com.au](http://www.stanceequitec.com.au)  
E: [sales@stanceglobal.com](mailto:sales@stanceglobal.com)



APVMA END Compliant

FEEDS FOR THE NATURAL ADVANTAGE™

## Stance Equitec

### Performance Supplements Range



**PowerStance** - Add to feed powdered coconut oil. Good source of lauric acid and MCTs. May help improve skin and coat condition and assist digestion. For horses and companion animals.



**Toxin Binder** - Add to feed powder supplement that may bind to harmful mycotoxins during suspected mycotoxin poisoning.



**ProFlex** - Add to feed powder suitable for horses and ponies. May help maintain health of cartilage, ligaments, tendons and may assist hoof growth.



**Turmeric** - Add to feed powder blend of turmeric, powdered coconut oil, ground black pepper and resveratrol. May assist joint/muscle soreness and inflammation.



**ProMune** - Add to feed powder 21 day course. Nutraceutical formula may boost immune system. Includes echinacea, andograpis and mannan oligosaccharides.



**Turmeric Golden Gel** - Benefits of turmeric, aloe vera & boswellia oil in a topical gel. May help with sarcoids, skin disorders and cuts or wounds.



**Respirite** - Oral decongestant liquid. Herbal formula may assist respiratory, immune and nervous systems. May help as an expectorant and may be useful in horses with Herpes 4 virus.



**UlcaBuf** - Add to feed powder. Natural acid balancer may support stomach and hindgut issues. Contains pre and probiotics. May be used during times of stress and long term.



**SandBuster** - Designed to feed to horses exposed to dry or sandy conditions, where an accumulation of sand in the hind gut may have occurred.



**VitaStance** - Add to feed powder. Bio-available all-in-one vitamin, mineral and amino acids supplement suitable for horses, ponies, donkeys and other equids.



Your free online equine nutritionist

For help choosing the right supplements for your horse, try Stance TruGuide.

1. Visit [www.StanceEquitec.com.au/TruGuide](http://www.StanceEquitec.com.au/TruGuide)
2. Answer the short 5 minute questionnaire
3. Receive a tailored balanced diet with product suggestions



**Stance**  
—EQUITEC

Freecall: 1800 782 623

[www.stanceequitec.com.au](http://www.stanceequitec.com.au)  
E: [sales@stanceglobal.com](mailto:sales@stanceglobal.com)



APVMA END Product

FEEDS FOR THE NATURAL ADVANTAGE™





*Important Rules  
to Follow*

## **IMPORTANT RULES TO FOLLOW AT PRARG GROUNDS**

The expectation from our Management Committee, Insurance Provider, Logan Council and Equestrian Australia is to ensure that only financial members of PRARG and registered competitors are permitted to ride on the grounds. To maintain our excellent reputation as a compliant and diligent club this warning reminder is stated:

***Do not allow your friends or other persons to ride your horse while on the grounds.  
A coach may but must have either EA insurance or their own a certificate of currency.***

There are no exceptions from this ruling and a serious penalty process will apply to anyone who jeopardises the rule. The rules we apply are to protect, one and all, so we expect that you will understand and respect this warning.

*GROUNDS: Anna Flohr - 0407 622 666*

### **INSURANCE**

As a rider at PRARG, unless you are a **FINANCIAL** member of **Equestrian Australia (via EQ)**, you are **NOT** covered for personal injury should you have a fall at the grounds. You are covered **24/7** for personal injury as an EA member when you ride. This benefit alone should be reason enough to join, either as a supporter, recreational, participant or competitor. Details on how to join can be found here [www.qld.equestrian.org.au/membership-categories](http://www.qld.equestrian.org.au/membership-categories)

### **DOGS ON THE GROUNDS**

As per the club handbook: Dogs on grounds: Dogs are not allowed on the grounds at any time whilst horses are present. Having dogs on the grounds is a risk to the safety of riders and horses. Your assistance in complying is sought – see By Law No 14. This is different when at the Saddlery Market as under LCC lease, the day is a fundraiser and dogs are allowed on a leash. If members have an exemption for their dog i.e. assistance dog please email this paperwork to: [prarginc81@bigpond.com](mailto:prarginc81@bigpond.com).

### **REDEEMING VOUCHERS**

As members know vouchers are handed out to those who work and in return you use them towards entries to events/functions/merchandise etc. However many members are not submitting their vouchers in for event entries. Ideally please attach to your HHD or at a minimum give us the voucher number. We have a limited ability within the Nominate entry to record the above. These vouchers are paper money and the treasurer needs to keep track of them. To all the members who have lots of vouchers to use—thank you as you a great volunteer.

### **KEEPING THE ARENAS CLEAN**

Members, if your horse does a manure in the arena, please clean up as it leaves a mess for the next person riding and for when members are harrowing the arenas for competitions. Over the years we have had rakes but they have gone walking. Normally you carry a shovel/rake in your float. A rake will be provided by the club again and will be positioned in the undercover area.